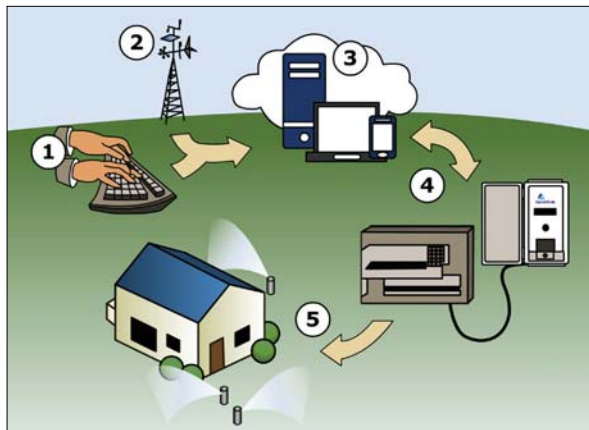




ETwater™ HermitCrab™ Accessory

Convert a conventional controller to a powerful ETwater Smart Controller.

A REVOLUTION IN SMART IRRIGATION CONTROL: SIMPLE, EFFICIENT, STATE-OF-THE-ART.



How It Works:

The ETwater HermitCrab plugs into a conventional controller via its remote control access port. The customer configures stations online with the award-winning, web-based ETwater Manager, and the ETwater server combines this site information with current local weather data to generate a custom irrigation schedule. Via wireless modem, the weather-adjusted schedule is downloaded daily from the server to the HermitCrab, which signals the conventional controller to open and close valves.

- 1:** Customer enters the landscape profile online.
- 2:** Local weather station captures weather and rainfall data.
- 3:** ETwater server computes ideal watering schedule.
- 4:** HermitCrab communicates with server bi-directionally, via wireless modem, to receive schedule and report field activity.
- 5:** HermitCrab, plugged into remote port of host controller, instructs controller to open and close sprinkler valves.

Save Money:

- **Great Value: Make your conventional controller "smart"** for much less than the cost of a new smart controller.
- **With 20%-50% water savings possible**, payback can be just a few months.

Save Labor:

- **Remote monitoring + management** via the Web.
- **Single-platform simplicity** allows management of multiple controllers of various brands at multiple sites — all with the award-winning ET Water web-based system.
- **Includes the most popular labor-saving features** from ETwater Manager.

Fastest Installation Ever:

- **"Plug and Play" installation** in under 10 minutes.
- **Compatible** with most major controller brands.



Compatibility:

The ETwater HermitCrab is compatible with most models of the following brands. Host controller must have a remote control port. See your distributor or www.etwater.com for details.

- Hunter®
- Irritrol®
- Rain Bird®
- Rain Master®

HermitCrab Features:

- **Self-adjusting** weather-based watering schedules.
- **Capacity of 48 stations**, or the maximum of the conventional host controller.
- **Weather-proof, vandal resistant** plastic NEMA 4X box and stainless steel hardware for mounting adjacent to existing controller.
- **LCD display** shows which station is on.
- **Two-way wireless communication** for downloading ET-based schedules, reporting irrigation and site data, and sending alerts.
- **Standard connection for rain sensor.**
- **Made in the USA.**
- **Three (3) year limited warranty** on the ETwater HermitCrab equipment.

ETwater Manager Features:

- **ETwater Manager, an easy to use Web interface** that provides quick set-up, automated irrigation scheduling, recent irrigation history, weather (ET and rainfall) updates and remote monitoring and adjustment.
- **Common platform** for efficiently managing hundreds of controllers of various brands from a single ETwater Manager account.
- **Alerts sent via email** and posted on user's account page on ETwater Manager website. Alert conditions include:
 - Any schedule change made at controller
 - Irrigation turned off at controller
 - Loss of communication
 - Rain sensor activation and resumption of watering.
- **Reliable, daily local weather and rainfall data** from more than 9,000 public & private professional grade local weather stations across the U.S. No need to buy or maintain weather station.

Hardware + Electrical Specifications

- Dimensions: 7.9" L x 3.9" W x 2.0" D
- Weight: 2 lb.
- Input voltage 24 volts AC
- In event of power outage, non-volatile memory retains all programming information indefinitely.
- FCC approved
- Accepts ¾" conduit

Disclaimer:

ET Water Systems, Inc. is neither affiliated with nor endorsed by Hunter Industries, The Rain Bird Corporation, Rain Master Irrigation Systems, Inc., or The Toro Company. The warranties of Hunter Industries, The Rain Bird Corporation, Rain Master Irrigation Systems, Inc., and The Toro Company do not apply to ETwater Hermit Crab products.

How to Specify ETwater HermitCrab Models

ETW-HC-H	HermitCrab with cable for Hunter host controller (3 wire remote connector)
ETW-HC-IR6	HermitCrab with cable for Irritrol host controller (6 pin remote connector)
ETW-HC-RB5	HermitCrab with cable for Rain Bird host controller (5 pin remote connector)
ETW-HC-RB6	HermitCrab with cable for Rain Bird host controller (6 pin remote connector)
ETW-HC-RM	HermitCrab with cable for Rain Master host controller (9 pin D type male remote connector)

Optional Services:

- **ETwater QuickDraw™ mobile control** application to control irrigation via smartphone, plus instant web connection to immediately update schedules, start/stop stations, apply/remove suspension.